

Dedicated software for tests of sanitary taps and hydraulic devices:

Software for laboratory tests:

AQ2TB-COMBILAB+

Multi purpose hydraulic measurement with flow, pressure and temperature acquisition. Variation of supply pressure and temperature. Pressure loss measurement.

AQ2TB-M-LAB-D08

Software for laboratory safety tests on thermostatic mixers, with evaluation of hot water collected in case of cold water failure, in accordance with D08 and NF Standards.

AQ2TB-M-LAB-NF+

AQ2TB-FLOW-LIN

Software for automatic flow-rate tests with linear pressure increase and multitrack pressure/flow-rate graph.

Software for endurance tests:

AQ2TB-1LD-H&C

Software for endurance tests on showers, flexible tubes and thermostatic mixers. Thermal stress tests with waters exchange. Tests according to NF and EN Standards.

AQ2TB-1LM-H&C

AQ2TB-1LM-DRIVE

Software for endurance tests on thermostatic mixers with two torque motors. Control and acquisition of angular speed and torque according to EN-NF or ASME-CSA Standards.

AQ2TB-1V-NHS

AQ2TB-LIFEFLEX

Software for pressure endurance tests on shower hoses with high temperature water according to EN 1113 Standards.

Software for production tests:

AQ2TB-M-PROD-NF

Software for thermostatic mixers tests according to NF, D08 and EN 1111 Standards; automatic test procedure, adjustable test parameters, evaluation of hot water collected and final temperature. Up to 3 test stations.

AQ2TB-M-PROD2NF

AQ2TB-M-PROD3NF

AQ2TB-M-PRODD08

Software for tests on hydraulic devices:

AQ2TB-Kv

Software for flow-rate test, Kv coefficient calculation and pressure loss evaluation at different flow-rate.

AQ2TB-KV-LAB

AQ2TB-EN12293

Software for thermal cycle on hydraulic tubes with hot and cold water exchange according to EN 12293 Standards.

AQ2TB-F+S-DRIVE

Software for fidelity and sensitivity tests with motor control and torque strength reading. Tmix/angle-rotation graph acquisition.

AQ2TB-NOISE

Software for acoustic tests on hydraulic devices. Measurement of total noise emissions and linear noise level generated according to EN 3822-1 Standards.

AQ2TB-FLOW-STEP

Cold, hot and mixed water flow measurement at different pressure steps with automatic control of cold and hot water pressure and flow-rate acquisition.

AQ2TB-LM-817

Software for single lever mixers endurance tests with linear and torque motors. Control and acquisition of linear and angular speed, according to EN, CSA and ASME Standards.

AQ2TB-LM-CSA

AQ2TB-LBM-817

Software for swivel spouts endurance tests with torque motor according to EN 817 Standards.

AQ2TB-LBM-CSA

AQ2TB-1LV-DRIVE

Software for endurance tests on flow control device with two motors, control and acquisition of angular position and torque according to EN-NF and ASME-CSA Standards.

AQ2TB-SEQ-HP

Software for incoming test evaluation of kitchen single lever mixers with control at low and high pressure and flow-rate measurement at cold, mixed and hot temperature position.

AQ2TB-SEQ-LP

AQ2TB-PULSEAUT

Software for automatic endurance tests with pulsing pressure and water hammer, static pressure seal and burst tests.

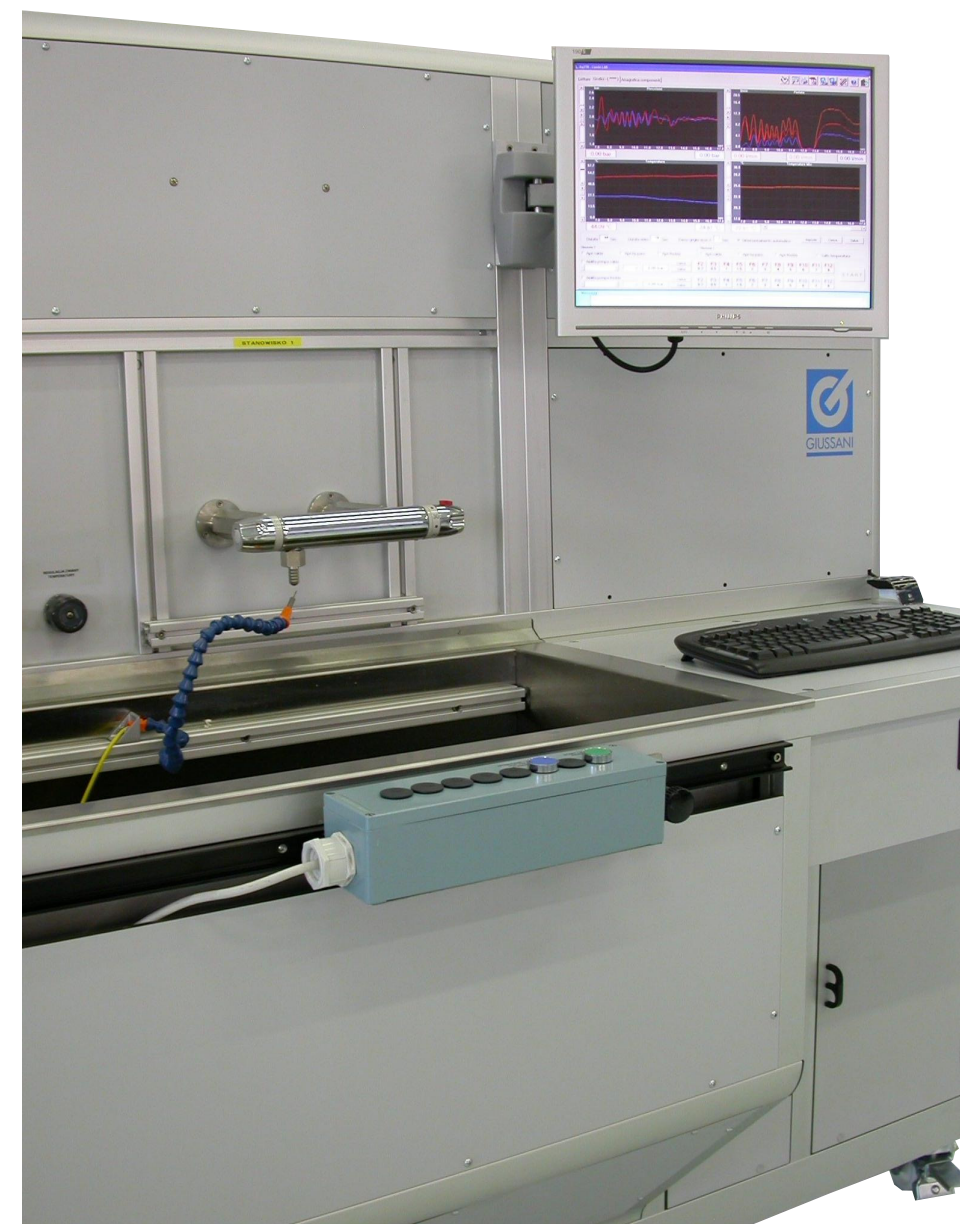
AQ2TB-STATICAUT

AQ2TB-LVALVE

Software for thermal cycles and endurance tests on hydraulic valves with torque motor and adjustable water supply temperature.

AQ2tb

Software for hydraulic tests



GIUSSANI S.r.l.

Via dei Crederi, 411
24045 Fara Gera d'Adda (BG) - Italy
Tel.: 0363/399019 - Fax.: 0363/398725
www.giussanionline.it
E-mail: info@giussanionline.it



ISO 9001
CERT. N°9115



A QUESTION OF CALIBRATION



AQ2tb is a new advanced software for use on GIUSSANI test benches. It allows to perform, in accordance with international Standards, hydraulic tests on sanitary taps, accessories, pipes, fittings and hydraulic components in general. The software is available in multilanguage version and with the possibility of working with different units of measure. It allows to acquire in real time all the main physical quantities (temperatures, pressures, flow-rate, degrees, torque, etc ...) and provide a detailed graphic documentation of tests being carried out.

Base software:

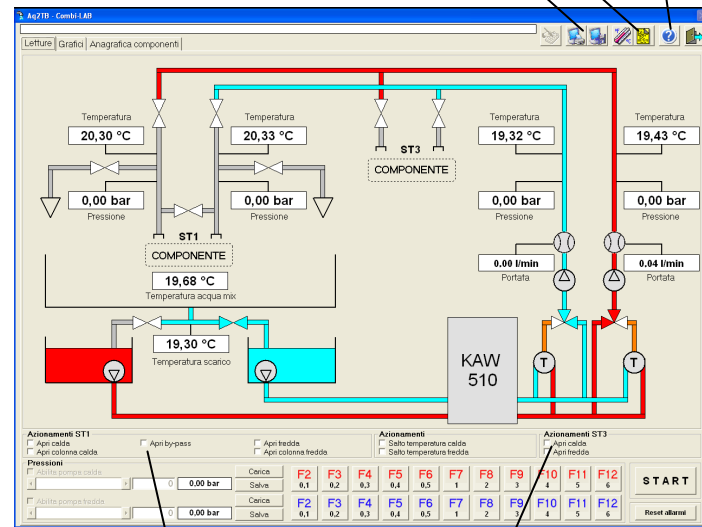
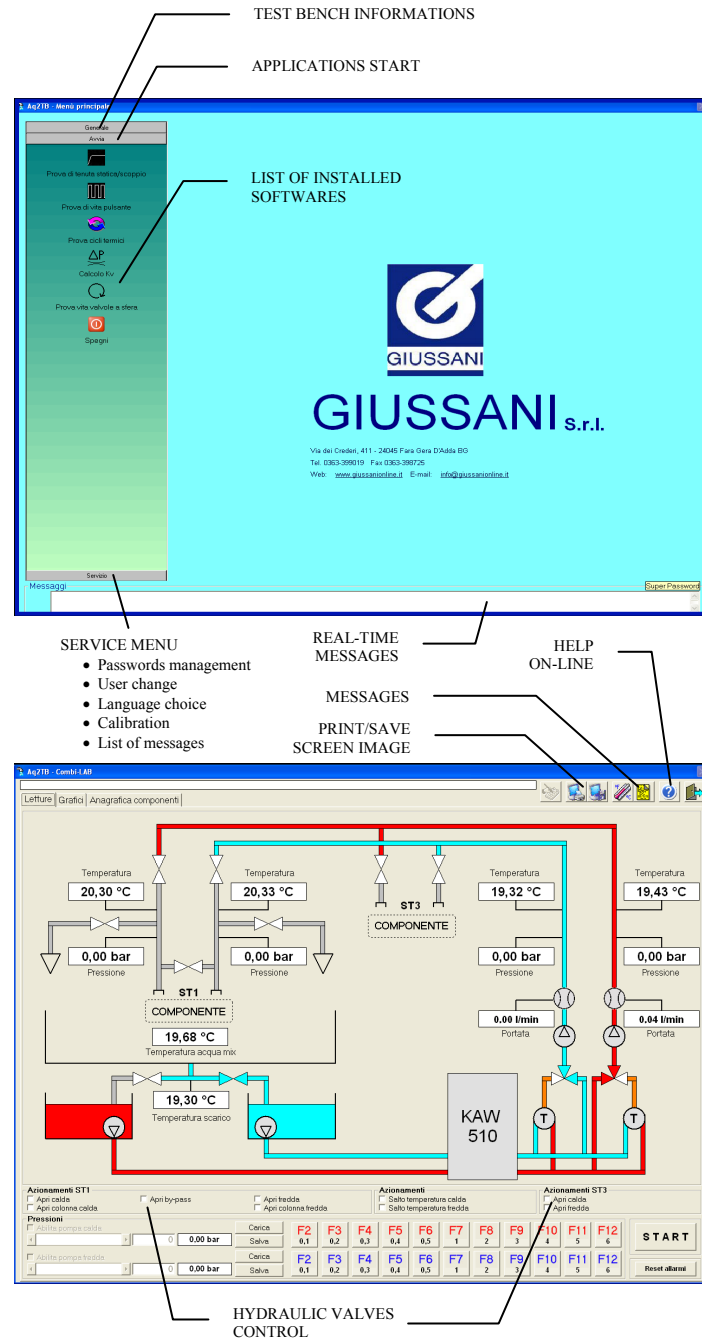
AQ2TB BASEMODE

Basic software for test benches, with a multi-channel data acquisition system, applications for password, language and messages management. Automatic or semi-automatic bench calibration and testing system.

SYNOPTIC GRID AND COMMANDS

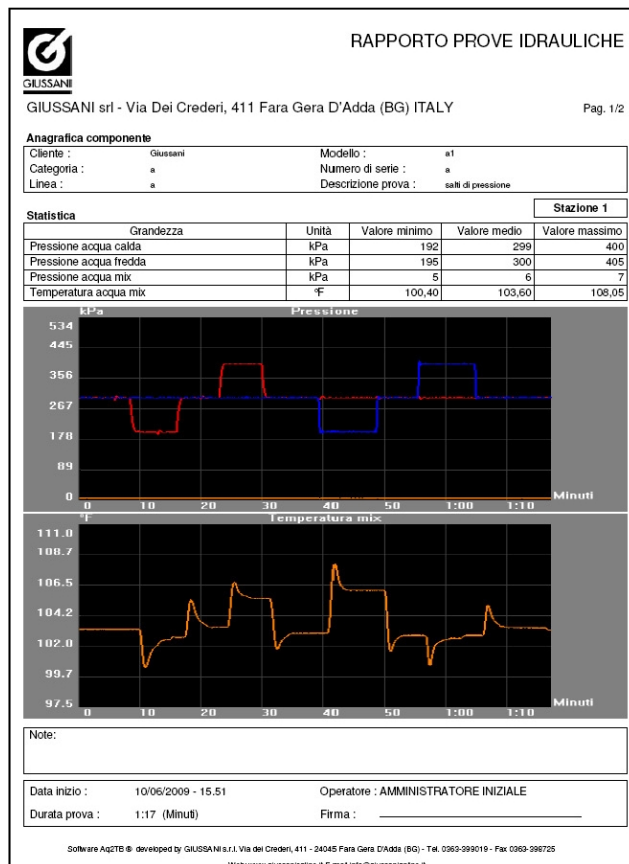
Entry page with access to the password, service functions, calibrated, change language access to software installed. Each application includes:

- Video screen representing the hydraulic system with an interactive synoptic: change of colour on intercepted lines, display of opening and closure of valves, indication of each important size in real time, display of alarms.
- Regulation of pressure pump with three command modes:
 - Adjusting the slider in continuous mode between zero and 100% of the scale bottom.
 - Setting the value required with resolution of 0,01 bar.
 - Using a sequence of 10 preset values.
- All commands of the internal valves and pumps occur through mouse clicking on the corresponding graphic symbol.
- All the video screens present can be printed with annotations and customer logo.
- Help on-line with all the main operating instructions.

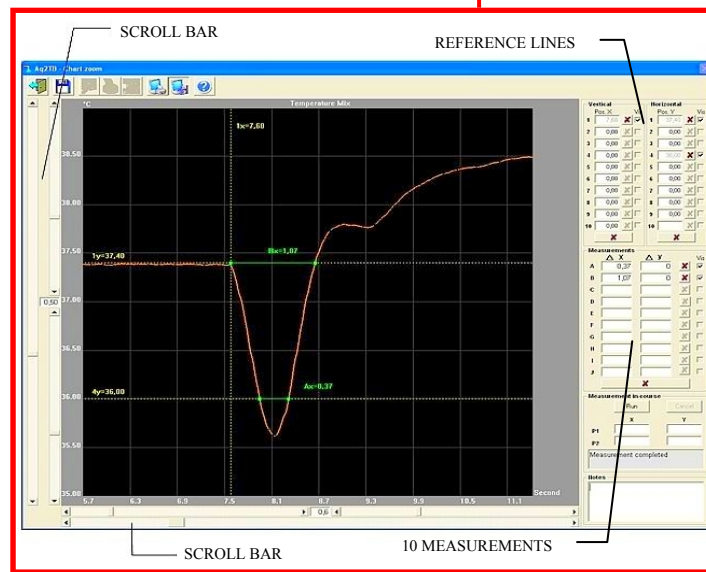
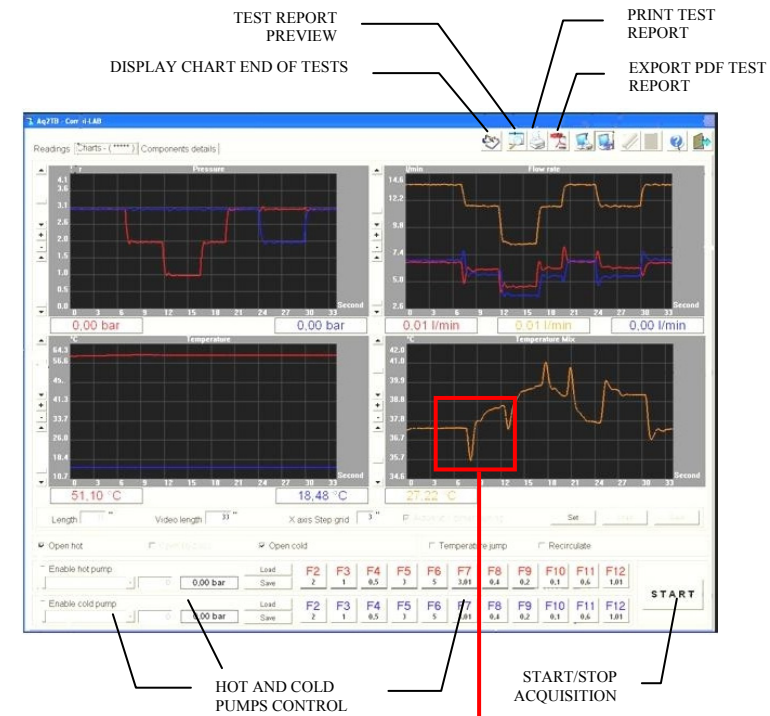


TEST REPORT

All screen images can be instantly saved or printed. Each test generates a report with details of the test, data acquisition graphs, final data and a representative screen shot. Each test can be recalled and the graph settings changed.



Main features:



TEST DISPLAY

- Video screen with multi-trace graph with different colours to identify the size representing the cold, hot and mixed water.
- Possibility to set the time of acquisition, the time base of the reading window, which can be made scroll to end acquisition, possibility to enlarge the work area.
- Summarising chart at end of test of the minimum average and maximum values of each size measured during the test.
- Automatically self-scalable graphs.

ZOOM FUNCTIONS AND MEASUREMENTS

At the end of acquisition through the mouse it is possible to analyze the test graphs in detail, enlarging and analyzing an important area. With the measuring function it is possible to analyze the result of the test in detail: the software allows to trace up to ten lines of horizontal and vertical reference and to perform up to ten measurements between the intersection of the lines of reference and measurement. Measures and lines can be deleted or made invisible for a better graphic representation of measure done.

COMPONENT DETAILS

Entry of test details with information relating to the customer, category, model, etc. Save, load and delete test functions.

MAIN FUNCTIONS OF SERVICE MENU

Calibration panel for automatic or semi-automatic check of the bench transducers. Application for enabling the external conditioner and managing the water recovery device.* Storage of the most important events occurring during use of the bench. Management of password for controlling access to applications. Option of changing the units of measure for the physics quantities monitored. Choice of interface language for messages, commands and instructions.**

* Function available only in benches with air-conditioned chamber and/or water recovery device.

** Languages available upon request from customer.

