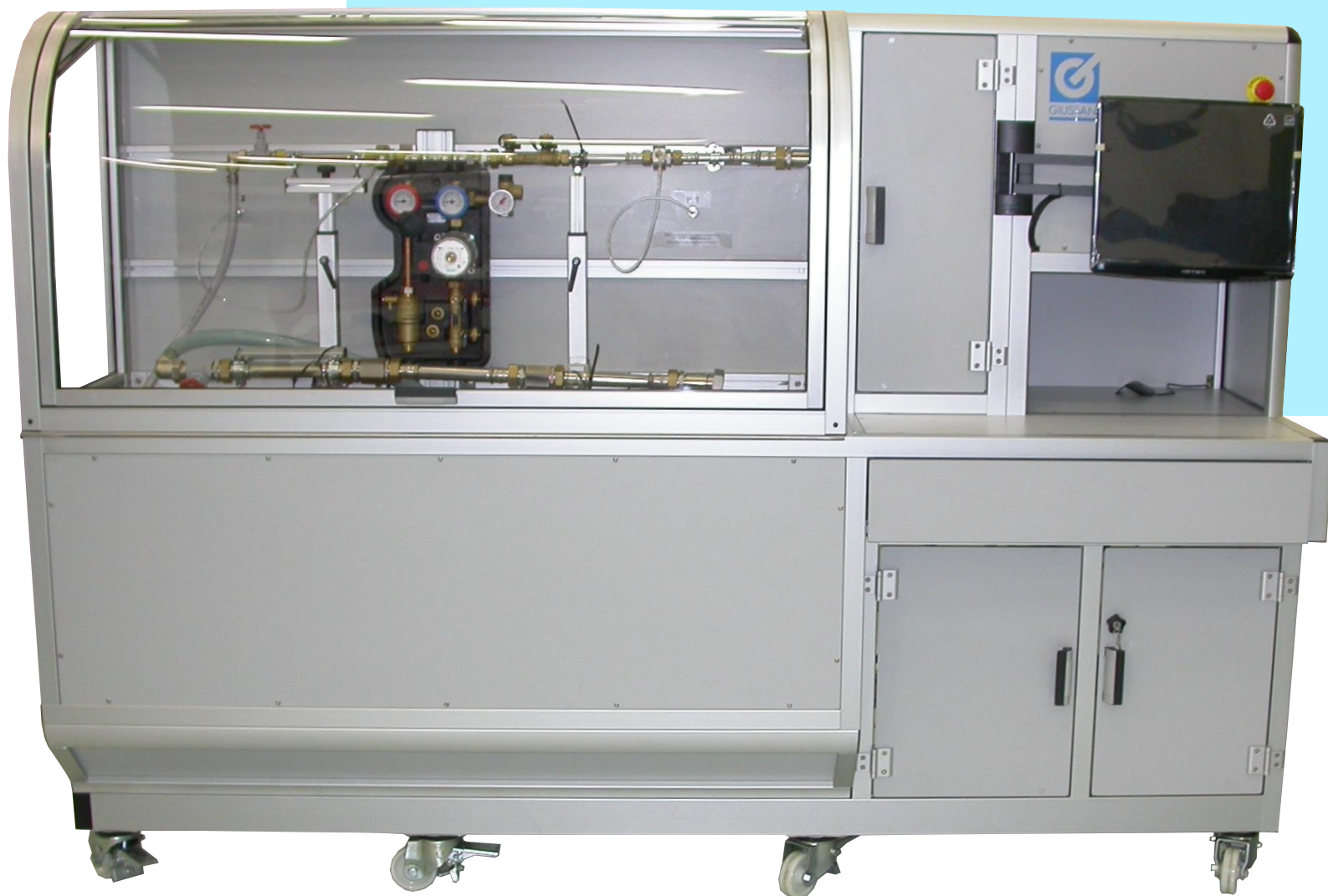


BPF-Q300

FLOW RATE TEST BENCH



Applications:

Flow-rate measurement of hydraulic devices with free discharge and automatic pressure increase or differential pressure measurement with calculation of Kv coefficient.

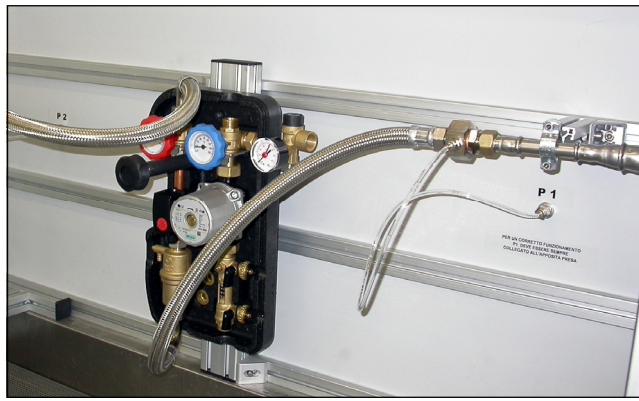


Fig. 1

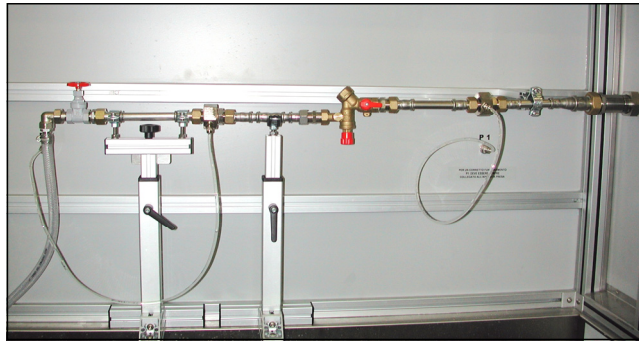


Fig. 2

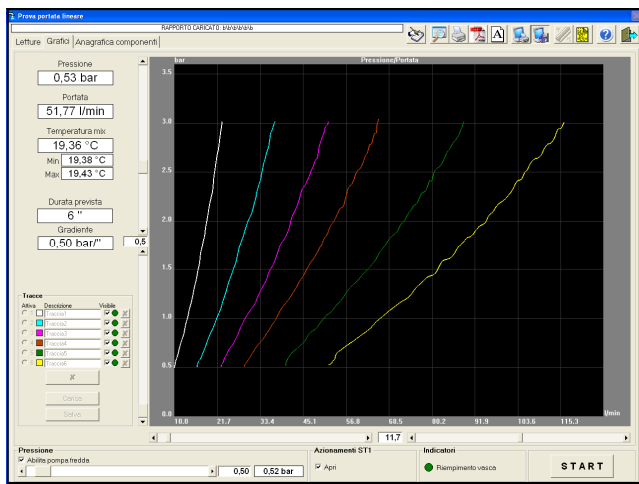


Fig. 3

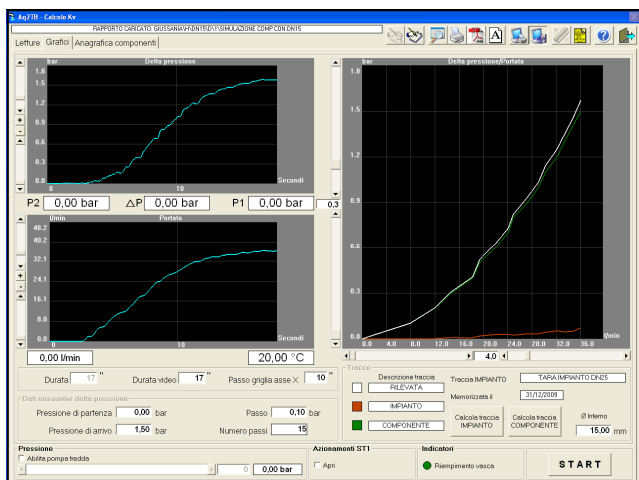


Fig. 4

TECHNICAL DATA

Flow meter accuracy:	±0,5% reading value
Operating range:	1,5 ÷ 250 L/min
Power supply:	400 V - 50/60 Hz
Electric power:	4 kW
Water temperature:	Ambient
Hydraulic supply:	0,2 ÷ 4 bar
Pneumatic supply:	5 ÷ 9 bar
Size:	2500 x 1100 x 1800 mm
Weight:	~450 kg



GIUSSANI S.r.l.
 Via dei Crederi, 411
 24045 Fara Gera d'Adda (BG) - Italy
 Tel.: 0363/399019 - Fax.: 0363/398725
www.giussanionline.it
 E-mail: info@giussanionline.it

BPF-Q300

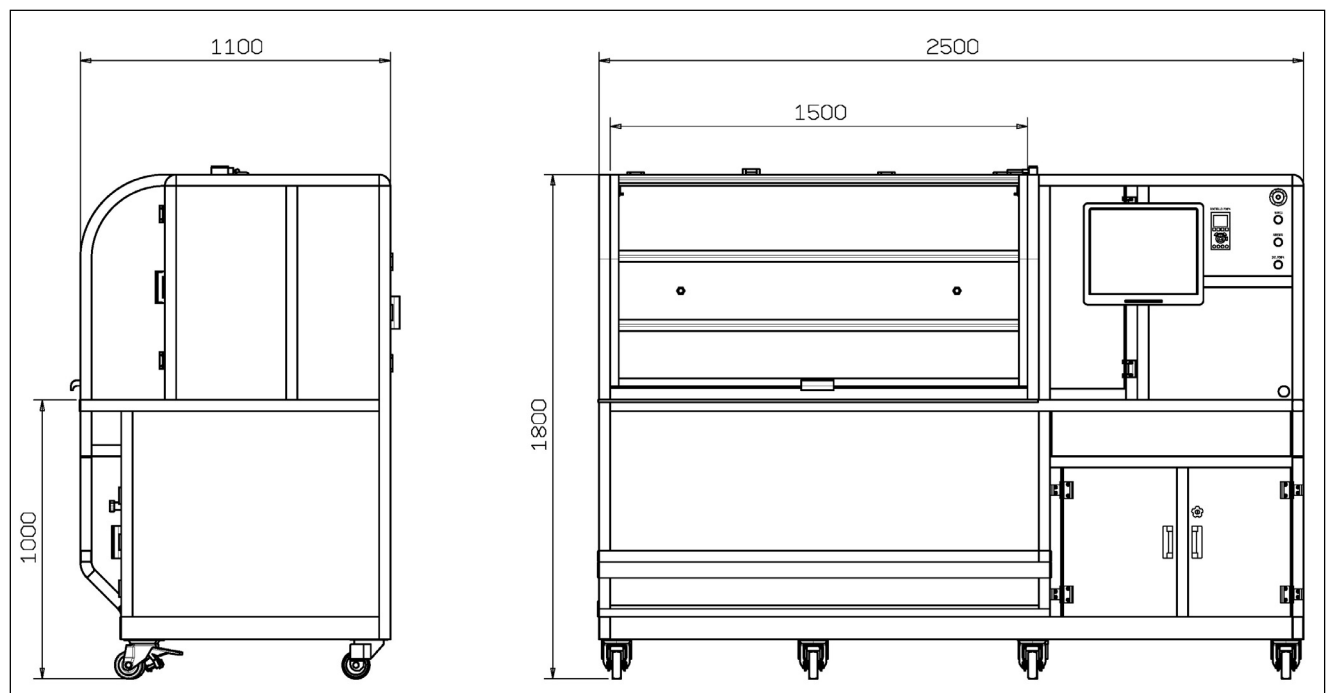
FLOW RATE TEST BENCH

EXECUTABLE TESTS*:

- Flow-rate tests with free discharge carried out with cold water circulation, flow-rate range from 2 to 300 L/min and automatic linear pressure increase. (Fig. 3) **(Test code: F01 - Software: AQ2TB-FLOW-LIN).**
- Flow-rate tests with differential pressure evaluation and calculation of the Kv coefficient. The tests are carried out with cold water circulation and flow-rate range from 2 to 300 L/min. The software automatically evaluates the Kv coefficient of the component under test corrected by the plant leak. Test pressure is controlled by software, while the flow rate is manually adjusted by the operator. **(Test code: F02 - Software: AQ2TB-KV-LAB).**

MAIN SPECIFICATIONS:

Supporting structural frame made of aluminium and laminated panels, assembly on rotating wheels provided with parking brakes.
 Hydraulic plant equipped with centrifugal pump with flow-rate range from 0 to 300 L/min, driven by inverter and feed-back transducer and magnetic flow-meter.
 Testing area (1500 x 550 x 850 (h) mm approx) with lifting cover protection guard, safety micro and removable grid.
 Stainless steel tank of about 220 L volume, provided with profiled aluminium supports, overflow pipe, drain tube, outlet valve and safety level.
 Hydraulic plant made of stainless steel pipes and hydraulic valves with electro-pneumatic actuator.
 Test plant built according to standard EN 3546 with flow-rate regulation valve, pressure connections and pressure probes with high dynamic response (Fig. 1 and Fig. 2).
 Test bench is equipped with work-station, U.P.S., external backup HDD, LCD 19" monitor, Microsoft Windows XP operative system and AQ2tb dedicated software.



STANDARD EQUIPMENT:

- DN15 test rig with flanged connections and flow-rate control valve.
- DN25 test rig with flanged connections and flow-rate control valve.
- Colour laser printer.

* **Note:** list and description of available tests in document: **D-TEST-IDR**



CERTIFICATION:

All the instruments are supplied with final testing, stability and accuracy certification traceable to S.I.T. standards.